



FIBA

We Are Basketball

IMPROVE YOUR... HEAD COACH'S CHALLENGE

Published October 2022
version 1.0

This Manual is based on
FIBA Official Basketball Rules 2022.

This publication is not intended to be a substitute for professional medical or legal advice and should not be relied on as health, legal or personal advice. FIBA is not liable for any claim, loss or injury based on this material, nor for any claim, loss or injury that results from your use of this material.

Please contact your medical or legal professional for personal advice.

The content cannot be modified and presented with the FIBA logo, without written permission from the FIBA Referee Operations.

October 2022,
All Rights Reserved.

FIBA - International Basketball Federation

5 Route Suisse, PO Box 29
1295 Mies Switzerland fiba.com
Tel: +41 22 545 00 00
Fax: +41 22 545 00 99

This material is created by the
FIBA Referee Operations.

If you identify an error or a discrepancy in this material, please notify the FIBA Referee Operations at refereeing@fiba.basketball

IMPROVE YOUR... HEAD COACH'S CHALLENGE

FIBA has implemented a significant rule change valid as of 1 October 2022. In all games where the Instant Replay System (IRS) is applied the head coach may request one head coach's challenge, i. e. ask the referees to verify their decision by using the IRS to review the game situation.

This booklet has been put together to provide guidance to correctly use the Head Coach's Challenge in your games.

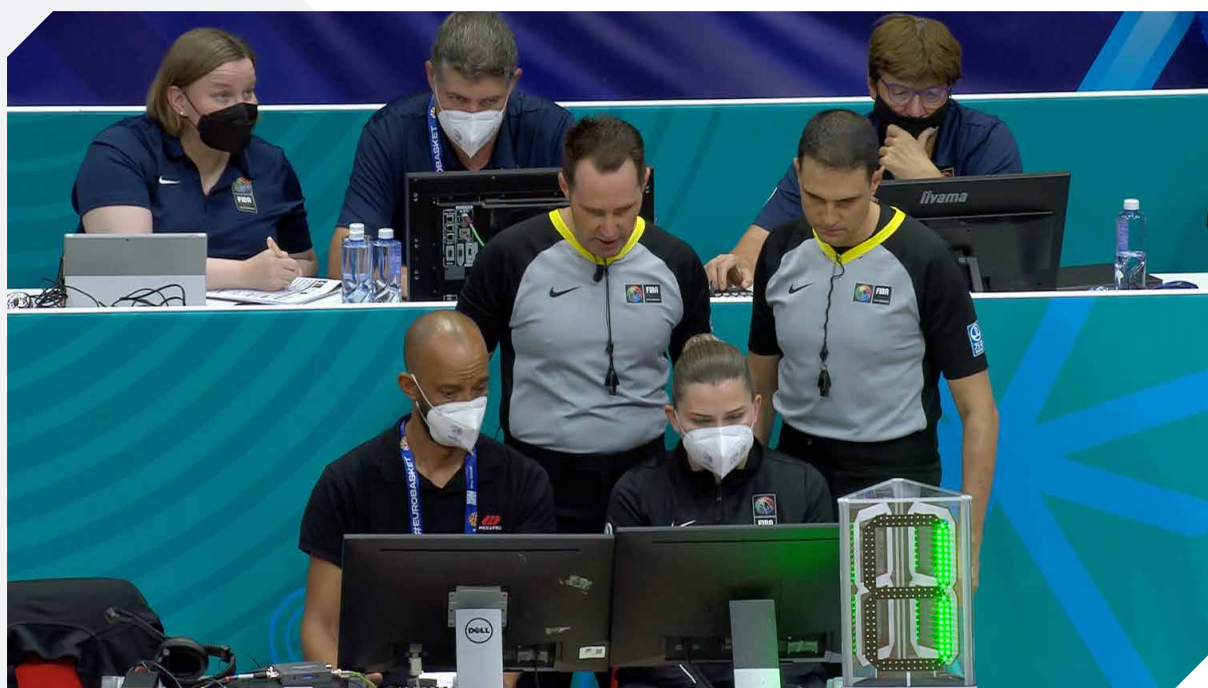
In the case of a discrepancy between any guidelines in this manual and the Official Basketball Rules (OBR) and/or the Official Basketball Rules Interpretations (OBR I), the latter (OBR and OBR I) will prevail.

THE RULE

All the reviewable game situations (as in the OBR Article F.3) may be challenged at any time in the game (see list below), without the normal "game time" restrictions for a standard IRS review.

The head coach must request the challenge when the game is stopped after the decision, or for those situations when the game is not stopped (e.g. 2 pts. vs 3 pts) the first time the referees stop the game after the decision. The request shall be final and irreversible.

Only one head coach's challenge per team is granted in a game, regardless of whether the result of the challenge is successful or not.



REVIEWABLE SITUATIONS

There is a video example of most common situations available to download.

Note: The time limitations in OBR F.3 do not apply for the Head Coach's Challenge. However, they do still apply for regular IRS reviews.

- ▲ Game Clock vs Valid Basket
- ▲ At the end of the Quarter / Overtime / Game:
If and how much time shall be displayed on the game clock, when:
 - an out-of-bounds violation of the shooter occurred.
 - a shot clock violation occurred.
 - an 8-second violation occurred.
 - a foul was committed before the end of the quarter or overtime.
- ▲ Shot Clock Violation
 - only if a shot was successful.
- ▲ A malfunction of the game clock or the shot clock
 - how much time on the clock(s) shall be corrected.
- ▲ Timing of a foul committed away from a shooting situation
- ▲ If Goaltending or Basket Interference Violation was called correctly

When the review determines that a goaltending or basket interference violation was not called correctly the game shall be resumed as follows, if after the call:

- the ball has legally entered the basket, the goal shall count, and the defensive team shall be entitled to a throw-in from the endline.
 - a player of either team has gained an immediate and clear control of the ball, that team shall be entitled to a throw-in from the place nearest to where the ball was located when the call was made.
 - neither team has gained an immediate and clear control of the ball, a jump ball situation occurs.
- ▲ If a scored basket is 2- or 3-points.
 - ▲ If 2 or 3 free throws shall be awarded
 - ▲ To identify the correct free-throw shooter
 - ▲ To identify the player who has caused the ball to go out-of-bounds
 - ▲ To upgrade/downgrade a foul
 - ▲ Fight / Act of Violence

VIDEO EQQ/EOG Basket

VIDEO EQQ/EOG Foul

VIDEO Shot Clock

VIDEO Clock Malfunction

VIDEO Foul away f/ ball

VIDEO Goaltending / BI

VIDEO 2 pr 3 pts

VIDEO 2 or 3 free throws

VIDEO Free Throw shooter

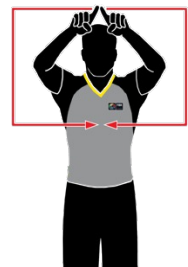
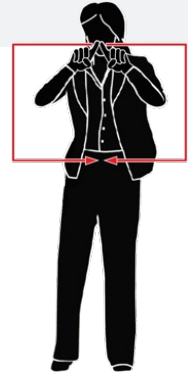
VIDEO Out-of-Bounds

VIDEO Foul Upg/Dwg

VIDEO Fight / Violence

PROCEDURE FOR THE HEAD COACH

- 1) The head coach makes visual contact with the nearest referee
- 2) The head coach must say loudly in English “challenge” and show the correct signal (the rotating extended index finger signal is not considered as the request for a challenge)
- 3) The request must be made
 - a) at the time the game is stopped after the decision to be challenged, that is the same game stoppage.
 - b) if the play is not stopped (2 or 3 points / Shot Clock Violation / Act of Violence) at the latest when the referees have stopped the game for the first time after the decision.
- 4) Indicate the situation to be reviewed to the nearest referee
- 5) Referees confirm the requested challenge is valid and the head coach’s challenge has been granted by showing the correct signal to the scorer’s table
- 6) Normal IRS Review Procedure applies, including:
 - a) During the IRS review the players remain on the court.
 - b) Only authorised persons have access to the IRS monitor.
 - c) After the final decision is communicated, either head coach may request a time-out or may withdraw it, or any substitute may request a substitution.
 - d) The initial decision of the referees can be corrected only if the review provides the referees with clear and conclusive visual evidence for the correction.
- 7) If the challenge is successful, the initial decision is overturned
- 8) If the challenge is not successful, the initial decision remains valid
- 9) Game shall be resumed as after any IRS review



PLEASE NOTE!

A time-out is not required to request a head coach’s challenge; and

There is no penalty if the head coach’s challenge is unsuccessful and there is no additional challenge granted should the challenge be successful.

ONE HEAD COACH’S CHALLENGE IS AVAILABLE PER TEAM, TO BE USED ANY TIME OF THE GAME.

STANDARD QUALITY GLOBAL CONNECTION



5, route Suisse - P.O. Box 29
1295 Mies
Switzerland
Tel.: +41 22 545 00 00
Fax: +41 22 545 00 99